



## **OFFICER REPORT TO LOCAL COMMITTEE (WOKING)**

### **COMMUNITY SAFETY**

**22 October 2009**

#### **KEY ISSUE**

The report provides an update on the work of the Safer Woking Partnership, under the umbrella of the Woking Partnership, and plans for the coming year. Borough and police partners have also contributed to this report and will attend the local committee.

#### **SUMMARY**

Surrey remains one of the safest counties in England and Wales, with falling crime and good levels of public confidence in the policing service.

The Safer Woking Partnership has achieved many of its objectives in 2008-9 and agreed a range of actions to deliver the objectives in its 2009-10 Partnership Plan.

#### **OFFICER RECOMMENDATIONS**

The Local Committee (Woking) is asked to agree to:

- (i) **delegate responsibility for expenditure of the County Council's local community safety funding in Woking to the Area Director (refer to paragraph 2.15).**
- (ii) **endorse the importance of the contribution of all services towards community safety and progress made.**

## 1 INTRODUCTION AND BACKGROUND

- 1.1 The Safer Woking Partnership comprises statutory representatives from six agencies: Surrey Police, Surrey County Council, Woking Borough Council, Surrey Primary Care Trust, Surrey Fire & Rescue Service and Surrey Police Authority. In the Crime & Disorder Act 1998 (amended 2006), crime and disorder reduction partnerships (CDRPs) are a statutory requirement with the function of auditing and monitoring local incidences of crime, and working together to devise and deliver an effective strategy to address it.
- 1.2 In 2008, the Safer Woking Partnership and the Woking Local Strategic Partnership (LSP) agreed to work more closely together. This has resulted in joint meetings, with agreed terms of reference. The first quarterly meeting was held in November 2008. This group is called The Woking Partnership.
- 1.3 The Woking Partnership comprises representatives of twelve agencies and organisations, including the statutory CDRP partners and others, such as the voluntary, faith and business sectors. The partnership has a wide brief to work and plan together to contribute to the well-being of the area and everyone who lives in, works in or visits Woking, through developing and delivering the Sustainable Community Strategy and providing an effective basis for the Woking Local Development Framework and Housing Strategy. It provides a forum for partners and appropriate bodies to maximise resources to address key issues and focus on the needs of the priority communities of Sheerwater and Maybury and Lakeview.
- 1.4 Section 17 of the 1998 Crime and Disorder Act requires local authorities to consider the crime and disorder implications of all their activities and functions, and do all that they reasonably can to reduce these problems. Surrey County Council services make an active contribution to crime prevention locally, through work with children and young people, trading standards, highways, countryside rights of way, and other key services.
- 1.5 The working group of officers for the CDRP undertook the annual strategic assessment of crime, disorder and anti-social behaviour in the borough in the latter part of 2008, in preparation for updating and refreshing the Partnership Plan 2009-10 with current objectives and activities. This can be downloaded from <http://www.woking.gov.uk/community/safety/priorities/pp0912.pdf>.
- 1.6 The CDRP is assisted in delivering its targets by systematic work undertaken through two important multi-agency meetings:
  - the Joint Action Group (JAG), which meets monthly to review local hotspots for anti-social behaviour and to agree actions to tackle the behaviour;

- the Community Incidents Action Group (CIAG) which meets monthly to monitor individuals having an impact on the community through their behaviour, and to agree and implement interventions to address this behaviour.

- 1.7 A number of other multi-agency meetings manage other aspects of crime in the division, including one set up to monitor “prolific and persistent offenders” (PPOs), the Multi-Agency Risk Assessment Conference (MARAC) to address high risk cases of domestic abuse, and the Multi Agency Protection Panel (MAPPA) which assesses individuals who may pose a risk to the public.

## 2 ANALYSIS

- 2.1 Over 2008/09 Surrey recorded the 3rd lowest crime figures in England and Wales with 59.3 crimes per 1,000 population. The crime rate in Surrey reduced by 5.5% on the previous year (2007/08) however crime in Woking increased by 6.8%. It is believed that this is partly due to the great success of the previous year. (crime figures for Woking borough are set out in Annex 1)
- 2.2 Reducing serious acquisitive crime, anti social behaviour and serious violent crime along with building public confidence remains the focus for Surrey Police. (The crime categories included in serious acquisitive crime include dwelling burglaries, theft of and from motor vehicles, robbery and aggravated vehicle taking. Serious violent crime includes murder, attempted murder and GBH).
- 2.3 Serious acquisitive crime is showing (as of Aug 09 Financial Year to Date - FYTD) a 3% rise (12 offences). This is a positive position to be in compared with other boroughs.
- 2.4 Vehicle crime has seen a 1.7% reduction (FYTD Aug 09) which is positive in the current economic climate. The Neighbourhood Team has been working on an operation targeting vulnerable vehicles where they have been left unlocked or with valuables on show. A staggering 1790 vulnerable vehicles have been identified since 16 January 2009. We continue to try to educate the public with regards to keeping their valuables safe and this remains our biggest challenge.
- 2.5 Dwelling burglary has increased by 16 offences (as of Aug 09 FYTD), although it is still low compared with other areas of the country. The Neighbourhood Team has been working on an operation targeting vulnerable dwellings amongst other tactics. Since 4 November 2008 we have identified 943 vulnerable premises whilst patrolling.
- 2.6 The Surrey Police website, [www.surrey.police.uk](http://www.surrey.police.uk), provides comprehensive data at borough and ward level on the latest crime figures and this data is refreshed every month (select Crime maps and statistics on the homepage). The Woking neighbourhood pages

include details of the local policing team and how to contact them, together with information about current priorities and concerns. Details of neighbourhood panel meetings are included in Annex 2, and neighbourhood officers in Annex 3.

- 2.7 Woking Borough Council has a team of neighbourhood officers, who are dirt busting, graffiti beating, troubleshooters, committed to improving the environment and making the Borough a better place to live and work. The seven members of the team pound the streets around the Borough, acting as a single point of contact for residents to report problems with litter, graffiti, abandoned cars, fly-tipping, refuse, recycling, public conveniences and soft landscaping. As certain types of anti-social behaviour contribute to people's fear of crime, the Neighbourhood Team also works closely with the police to take action against offenders. Details of the team members can be found in Annex 4 and more information is on the Woking Borough Council website <http://www.woking.gov.uk/environment/team> and click on your area.
- 2.8 The Home Office have committed the Police to increase public confidence. This is reflected nationally in the joint measure to increase public confidence in the local police and council. Quarter 1 results show Woking as top in the force taking the range of around 12 questions into account.
- 2.9 To report a crime or incident or to contact your local Safer Neighbourhood team call 0845 125 222. If it is a genuine emergency call 999. For up to date details of your local team please check the website [www.surrey.police.uk](http://www.surrey.police.uk) and click on your neighbourhood.

### **Strategic assessment of needs and concerns**

- 2.10 Following the 2006 review of the 1998 Crime and Disorder Act, the government issued guidance in 2007 requiring authorities to undertake annual strategic assessments to provide partnerships with recent intelligence and evidence to help them prioritise their work. This annual assessment is used to produce a Partnership Plan. The assessment draws on local evidence, ranging from crime data to traffic accident analysis from Surrey highways and records from the borough of damage and graffiti. Public survey data is also taken into account.

### **Partnership successes in 2008/9**

- 2.11 Some successes from 2008/09 are set out below:
- The monthly Community Incident Action Group (CIAG) looks at problem individuals causing an impact in the community. Between January 2008 and April 2009 there were 21 cases considered, of which 14 were new cases nominated in that period. Of these 21 cases, 4 were female, 16 male, one was a family group and 8 were juveniles (under 18 years of age). There were a range of interventions

used to tackle the issues concerning the individuals, including home visits, Acceptable Behaviour Contracts and eviction proceedings.

- The monthly Joint Action Group (JAG) looks at problem locations. There were 13 hotspot locations considered between January 2008 and April 2009. Of the 9 looked at in 2008, 7 were discharged within that year. There were a range of actions taken to tackle the problems in these areas including improved security arrangements, enforcement action such as alcohol confiscation, crime prevention advice, youth outreach and high visibility policing.
- Domestic Abuse Awareness Week in October 2008 included staffed and static displays, media coverage and staff awareness sessions. In total we handed out over 5,000 items with information on how to access help and support.
- The Junior Citizen Scheme operated for 3 weeks in October 2008 and reached about 1,200 primary school pupils aged 10 and 11 years old. They attended Woking Football Club for a morning or afternoon and went around a series of interactive sets, spending 10 minutes on each, to receive some key safety messages. It covered subjects such as fire safety, anti-social behaviour, water safety, 'stranger danger', first aid and internet safety.
- An open day was held at Woking Police Station on 18 October 2009. Surrey Police and partners, such as Surrey Women's Aid, Victim Support, Neighbourhood Watch, Fire Service and housing staff from Woking Borough Council, provided information stands at this open day that was well attended by local residents. It gave us an opportunity to inform the public about what services we provide and where they can get help and advice.

#### 2.12 The Partnership gave financial support to several projects in 2008/9:

- Life Education Centres aim to help children make healthy choices. The funding helps them to offer a free visit to every primary school in the area with their mobile classroom. For each class group they construct a session that is appropriate to the pupils' age and needs. These are delivered by Life Education's own specially-trained Educators using a life-skills approach so that each year children increase their knowledge, skills and confidence to make informed health choices. Topics covered include: how the body works, the importance of healthy diet and exercise, safe use of medicines, the risks of tobacco, alcohol and non-prescription drugs and emotional wellbeing (including bullying.) Emphasis is placed on teaching in a fun and interactive manner using music, sound and light effects as well as interactive technology and Life Education's life-sized illuminated model of the human body.

- Surrey Fire and Rescue Service provides the Youth Engagement Scheme (YES) and the partnership provided some supporting funding for this. YES involves young people who are considered at risk of becoming involved in anti-social behaviour or youth crime, spending a week at a fire station where they experience hands-on firefighter training. The course gives them the opportunity to develop both practical and social skills through a number of different tasks. The young people also learn about educational and career opportunities, the importance of teamwork, respect and understanding of the consequences of breaking rules and anti-social behaviour. At the end of the course a 'graduation ceremony' is held where the young people carry out demonstrations in front of guests, including their parents/guardians. For some of these young people it is the first time that they have achieved something and been praised for it which is a new and powerful experience that can have a profound effect on their behaviour.
- The contribution to Surrey Crimestoppers assisted with a burglary campaign with posters and post cards that supported proactive work being carried out by the Surrey Police Neighbourhood team, including crime prevention stands supported by WBC Neighbourhood Officers and Neighbourhood Watch.
- Starting in 2007/8, we held a series of 9 community engagement events called Tune In. In 2008/09 we held the final 3, Knaphill and Brookwood in May, Old Woking, Kingfield and Westfield in July and the town centre in September. Residents in each of the local areas were invited with a flyer to each household and on arrival were asked to identify their 3 key concerns about the local area. There was then time to browse around some information stands from the statutory agencies, the voluntary sector and local organisations, eg sports clubs, residents associations. The attendees were then invited to join in with one of three facilitated workshops on the 3 top concerns raised, which tended to be regarding community safety , eg road safety, youth crime, litter, to establish some plans for how we could all tackle these together. After the meeting updates were posted on the 'Window on Woking'.
- Some of the capital funding we receive from the Government was used to purchase specially branded bikes for both the Police and Council Neighbourhood Officers. Officers using the bikes are enjoying all the benefits of patrolling on foot, such as being approachable and visible to members of the public, but are also able to cover a lot more ground and increase their presence within the community. The scheme ties in with Woking's status as a cycling town and has allowed the officers to work more efficiently and effectively in their neighbourhoods, gaining quicker access to parks, commons and lanes. There have been a number of successes with the introduction of these cycle patrols. For example, in March 2009, the local police

officer for Byfleet, West Byfleet and Pyrford, PC Philip Beach was cycling along Mill Lane early one evening when three men were seen acting suspiciously in a parked car. PC Beach approached the car and noticed a strong smell coming from inside the vehicle. Neighbouring officers from Sheerwater and Maybury assisted with a search of the car and its occupants, resulting in the seizure of a quantity of bags containing herbal cannabis and a set of electronic scales. Following the team's initial enquiries, several home addresses were then searched and a further amount of Class B drugs was seized. Three men were arrested on suspicion of possession of a Class B drug with intent to supply. A considerable amount of drugs was seized as were the men's mobile phones – two men received a police caution in relation to this incident.

- The Partnership provides a grant to Surrey Women's Aid to provide a Domestic Abuse Outreach Service in the local area. The outreach staff provide practical support and signposting for victims suffering from emotional, physical, sexual and financial abuse. From April 2008 to March 2009 there were 322 referrals to the Woking service, of which 192 had children, 287 were women and 35 men. There were 33 self referrals, 253 referrals from Surrey Police, with a range from other agencies including 7 from Social Services.

2.13 The PCT has launched an alcohol strategy for Surrey which will target hazardous drinkers, and young people aged under 24, as well as ensuring effective law enforcement on alcohol. The strategy can be viewed at [http://www.surreybigdrinkdebate.nhs.uk/Alcohol%20Strategy\\_FINAL%20VERSION.pdf](http://www.surreybigdrinkdebate.nhs.uk/Alcohol%20Strategy_FINAL%20VERSION.pdf)

### **Partnership Plan 2009-10**

2.14 The Partnership has agreed to target the themes set out below, which were highlighted through the strategic assessment of data. A number of these themes will be addressed through actions at JAG, CIAG, or through mainstreamed service delivery of the statutory agencies on the Safer Woking Partnership. Specific partnership action plans have been developed for speeding/parking and personal safety after dark.

#### **Crime**

- (i) Theft from vehicles (sat-navs and number plates)
- (ii) Dwelling burglaries by out of area offenders
- (iii) Alcohol related violent crime, particularly violence in licensed premises
- (iv) Youth violence, including youth on youth and knives
- (v) Hate crime incidents
- (vi) Sale of alcohol to children and those under the age of 18
- (vii) Domestic Abuse



**Anti-social behaviour**

- (viii) Speeding
- (ix) Parking on verges/pavements
- (x) Damage in car parks
- (xi) Young people hanging around shops and play areas
- (xii) Noise nuisance
- (xiii) Fly tipping in “hotspot” areas, notably Goldsworth Park, Old Woking, Kingfield and Westfield, Sheerwater and Horsell
- (xiv) Hazardous drinking of alcohol i.e. above sensible levels
- (xv) Rubbish and litter
- (xvi) Disorder in areas where there is a high proportion of rented property (especially housing association)

**Community Reassurance**

- (xvii) Perceived personal safety of females and older members of the community, when they are out and about in the area, especially after dark
- (xviii) The wider involvement of members of the community in efforts to address crime and community safety issues.

**Fire**

- (xix) Continued attention to suspicious fires, especially in Goldsworth East, Maybury and Sheerwater, Byfleet, Knaphill and Horsell West.

2.15 A copy of the detailed Partnership Plan can be viewed at <http://www.woking.gov.uk/community/safety/priorities/pp0912.pdf>. Annex 2 sets out a timetable of community safety action for 2009-10, linked to the partnership plan. This includes neighbourhood panel meetings, reassurance activities and domestic abuse activities.

- 2.16 The total budget allocated to the CDRP in 2009-10 is as follows:
- Basic Command Unit Fund – £32,906
  - Safer and Stronger Partnership Fund - £91,144 (split as capital £27,986 and revenue £71,158)
  - Partnership fund (contributions still to be confirmed: Surrey County Council £14,500 (£12,000 conditional on DA outreach being provided see below) and Surrey Police £2,000, Surrey PCT £1,520 and Woking Borough Council £2,000 – total £20,020
  - Domestic abuse services (contributions still to be confirmed: Surrey Police £12,000), and Woking Borough Council £15,996.

The county council has set aside £14,500 funding for community safety in each borough. Of this, subject to the CDRP funding a domestic abuse outreach service, £12,000 is available to partnership funding for projects. The additional £2,500 may be allocated by the local committee towards community safety projects. A domestic abuse outreach service is provided and as



such, the £12,000 partnership funds will be released to the CDRP. It is proposed to delegate the additional £2,500 to the Area Director in order for it to be paid alongside the £12,000 to the CDRP for partnership priority activity as outlined above and in the partnership plan.

### **Key initiatives within the 2009/10 Plan:**

- 2.17 In early 2009, Surrey Police piloted a new pro-active targeted partnership in the North Surrey Divisional area, in response to anti-social behaviour in specific neighbourhood areas called Operation Quake 1. The second of these, Operation Quake 2 was a Surrey wide operation targeting anti-social driving in 5 key areas and was carried out in the Maybury and Sheerwater areas of Woking in May 2009.
- 2.18 The Safer Woking Partnership is running a series of community action days, under the banner of Operation Quake, in local neighbourhoods to target anti social behaviour. One has already taken place in Maybury on 19 September to clean up the graffiti around Alpha Road. 'Quake Goldsworth Park' is planned for 28 October targeting:
- Anti-social cycling around the park - raised at the panel meeting
  - Anti-social dog walking around the lake - raised at the panel meeting
  - Improve engagement with local teenagers - climbing wall arranged
  - Improve engagement with local community - climbing wall and hot dogs
  - Reduce burglaries and car crime - handing out timer switches and sat nav cloths etc to educate the local residents.
- Further days are planned in the new year and will be agreed and monitored through the JAG meetings.
- 2.19 The partnership is involved with a week long initiative to highlight night-time related safety issues to local people. We will be talking to community members about road safety, cycle safety, personal safety, crime prevention and using fireworks responsibly. The specially illuminated 'Light up the Night' vehicle will be visiting various locations between Saturday 31 October, starting with Neon Night, a cycle safety initiative, and finishing at bonfire night at Woking Park on Saturday 7 November. All of this work links in with the national 'Not in my Neighbourhood' campaign at that time and Quake 3 to target anti-social behaviour around 'trick or treating' for Halloween and anti-social use of fireworks.
- 2.20 Domestic Abuse Week: 19 – 23 October 2009. Awareness raising activities will include:
- stands with information and 'give aways' in Wolsey Place for three days, Peacocks for two days and Woking train station for one day
  - static displays at the Civic Offices, Woking library, Pool in the Park, Leisure Centre and community centres
  - articles in the Woking Magazine and the local press

- coverage on local radio
  - attendance at school assemblies in secondary schools.
- 2.21 Drive SMART, a campaign to encourage people to drive more considerately, was launched by Surrey County Council and Surrey Police this September. Surrey County Council has pledged £1million towards tackling this issue of greatest concern to local residents, which recent council elections, results of local surveys and issues raised at neighbourhood panel meetings have identified as anti-social driving. The campaign targets a range of driving behaviours that negatively affect the lives of other road users or local residents. These include tailgating, bad or inconsiderate parking, using a handheld mobile phone at the wheel, speeding, drink and drug driving, not wearing a seatbelt and generally thoughtless or reckless driving. The focus of the campaign is on education and changing behaviour. Roadside Education and Enforcement Day (REED) events will be held across the county over the next 12 months and are one of a range of education and enforcement initiatives that will help tackle the problem. The campaign is also being supported by advertising which will highlight to people the selfishness of their anti-social driving habits. The first REED event in Woking is likely to take place in November.
- 2.22 To increase the number of school speedwatches from 8 to 10 and the number of community speed watches from 5 to 7 by the end of March 2010
- 2.23 Nearly all schools in Woking now have a plan to promote sustainable travel ahead of the March 2010 deadline. 21 of Woking's 24 primary schools are taking part in the bikeability scheme for Year 6 pupils to promote safe cycling this academic year. Last year 550 students were trained in bikeability and this academic year it is predicted that as many as 1200 pupils may take part.
- 2.24 Annex 3 sets out the timetable for the community safety actions being undertaken during the year 2009/10.

### **Other partnership developments**

- 2.25 Woking now falls within the West Surrey police division, alongside Waverley, Guildford and Surrey Heath, with a divisional headquarters in Guildford. The senior management team for the West division is headed up by Divisional Commander Helen Collins, assisted by Neighbourhoods Superintendent Ray Marley.
- 2.26 There is currently a role out of the Government Connect initiative. Once connected, partners from various statutory agencies will be able to exchange personal and confidential information electronically using a secure network, which will increase ease of communication in relation to the groups such as CIAG (described at 1.6).

- 2.27 Woking Borough Council was awarded Prevent Violent Extremism Pathfinder funding for the year 07/08 (£70,000) and 3 year PREVENT funding for 08/09–10/11 (08/09 £105,000 and 09/10 £143.29) by DCLG to be accessed via the Local Area Agreement. Annex 5 sets out a number of projects which are/have been delivered under this programme.

### **Safer and Stronger Communities Partnership Board**

- 2.28 Community safety forms part of the “safer and stronger” theme of the Surrey Strategic Partnership. In addition, to the Sustainable Community Strategy. The Safer and Stronger Communities Partnership Board was established in 2005/6. Chaired by the Chief Constable, it includes senior representatives from Surrey Probation, Surrey Police Authority, Surrey County Council, Surrey PCT’s Public Health, borough chief executives and CDRP chairs, youth justice service, Government Office for South-East and is supported by the Surrey Community Safety Unit. It currently oversees safer and stronger targets in the 3 year Area Agreement (LAA) with government, and agrees the basis for safer and stronger funding from the Area Based Grant (a non ring-fenced general grant from Government), e.g., to individual CDRPs. During the autumn/winter 2009 it will agree its future strategy for funding crime and disorder work.

## **3 OPTIONS**

- 3.1 As outlined under 2.15, the Committee has two options with regard to the £2,500 funding: to delegate finance decisions to the Area Director who attends meetings of the Crime and Disorder Reduction Partnership, or to require that proposals for this expenditure are brought before the local committee. The latter option would be impractical, given the timescales for such decisions and the relatively modest sum of expenditure involved.

## **4 CONSULTATIONS**

- 4.1 Surrey Police conduct regular neighbourhood panel meetings at local level with members of the public, as part of the neighbourhoods’ agenda. Details of forthcoming Panel meetings and neighbourhood officers are laid out in Annexes 2 and 3.

## **5 FINANCIAL AND VALUE FOR MONEY IMPLICATIONS**

- 5.1 None.

## **6 EQUALITIES AND DIVERSITY IMPLICATIONS**

- 6.1 The CDRP funding contributes to a domestic abuse outreach service provided under a service level agreement with Surrey Women's Aid. Support and signposting is provided to people, referred by the police and other local agencies, or self referrals, who have experienced various types of domestic abuse.
- 6.2 Steps are taken to ensure that the Neighbourhood Panel meetings are accessible for all and hard to reach groups are targeted. Surrey Police has a minicom number - 01483 53 99 99.
- 6.3 Incidents of hate crime are monitored carefully by Surrey Police.

## **7 CRIME AND DISORDER IMPLICATIONS**

- 7.1 The Crime and Disorder implications are implicit in the report.

## **8 CONCLUSION AND RECOMMENDATIONS**

- 8.1 Members are asked to agree to delegate responsibility for expenditure of the County Council's local crime and disorder funding in Woking to the Area Director.

## **9 REASONS FOR RECOMMENDATIONS**

- 9.1 The delegation is recommended to facilitate timely decision making in response to fast moving trends in patterns of crime and disorder locally.

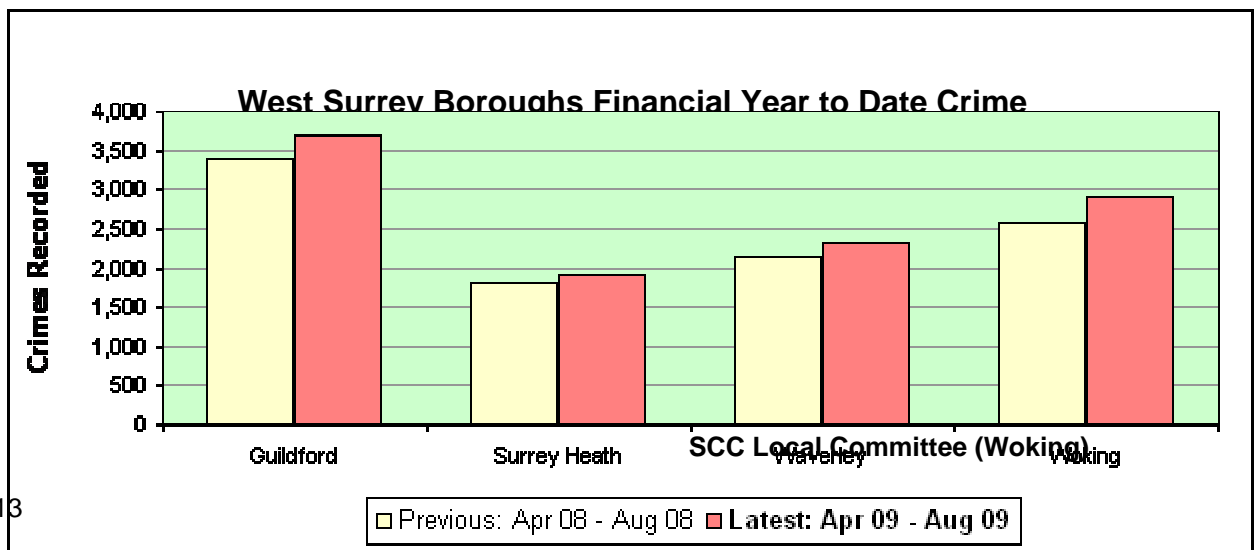
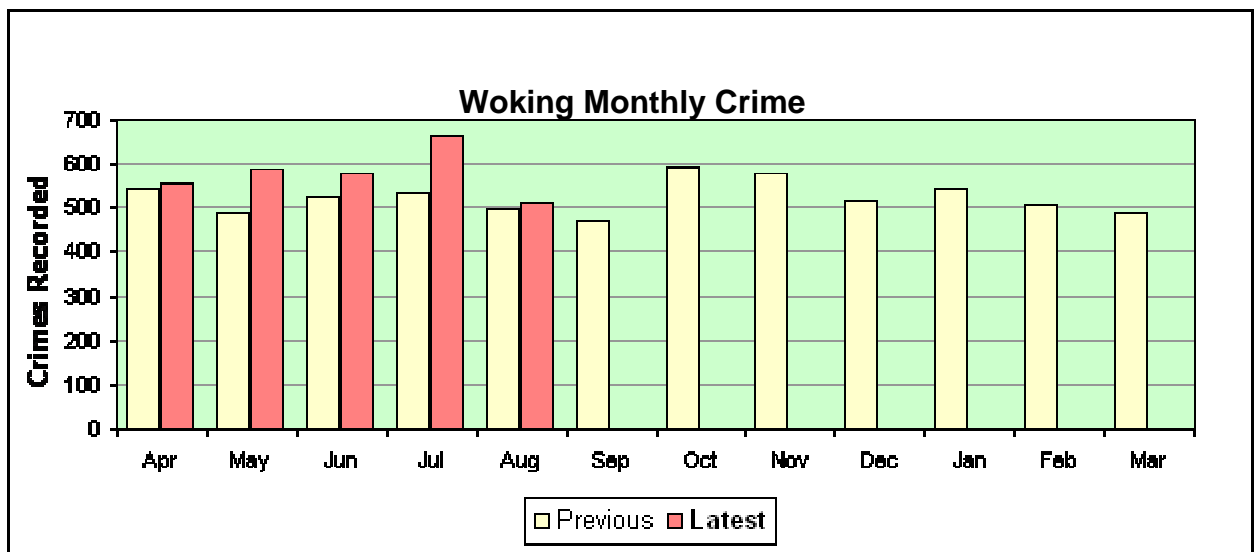
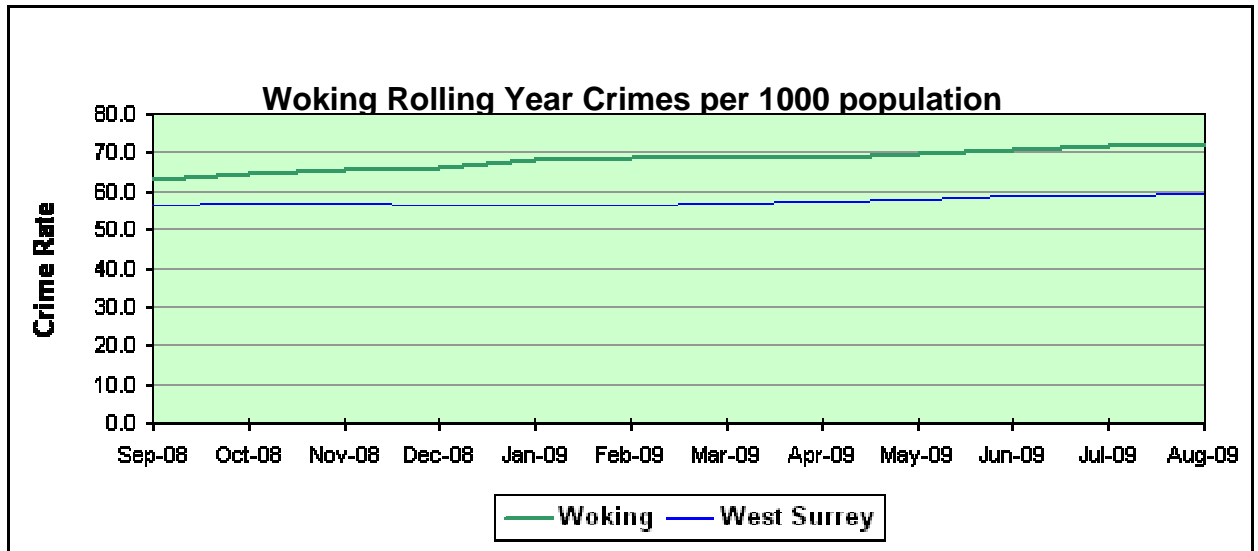
**LEAD OFFICER:** Carolyn Rowe, Area Director  
**TELEPHONE**  
**NUMBER:** 01483 518093

**E-MAIL:** [carolyn.rowe@surreycc.gov.uk](mailto:carolyn.rowe@surreycc.gov.uk)

**LEAD CONTACT**  
**OFFICERS:** Sarah Goodman/Ruth Brown, Local Committee  
& Partnerships officer, (01483 518095), Camilla  
Edmiston, Community Safety Officer, WBC  
(01483 743080), Neighbourhood Inspector  
Lynette Shanks (0845 125 2222)

**E-MAIL:** [Localpartnerships.woking@surreycc.gov.uk](mailto:Localpartnerships.woking@surreycc.gov.uk)

## Woking Total notifiable offences



# ITEM 7

| Data to August 2009       |  | Guildford | Surrey Heath | Waverley | Woking  | West Surrey |
|---------------------------|--|-----------|--------------|----------|---------|-------------|
| Latest: Apr 09 - Aug 09   |  | 3,700     | 1,912        | 2,326    | 2,894   | 10,832      |
| Previous: Apr 08 - Aug 08 |  | 3,391     | 1,811        | 2,130    | 2,581   | 9,913       |
| % <i>Change</i>           |  | + 9.1%    | + 5.6%       | + 9.2%   | + 12.1% | + 9.3%      |

## Annex 2

**Community Safety Action Timescales 2009-10**

| <b>Date</b>     | <b>Activity</b>  | <b>Responsibility</b>   | <b>Publicity</b>  | <b>Electoral Division</b> |
|-----------------|--|---|---|---------------------------|
| 21 May          | Operation Quake 2. Partnership Action Day in Sheerwater and Maybury to address concerns about anti-social driving                                  | Surrey Police, Surrey Fire & Rescue, Trading Standards, WBC, DVLA, VOSA | Operation Quake 2 – Newsletter circulated after event by Police                   | Woking Central            |
| 7 Sept (issued) | Distribution of Woking Magazine containing article about people who look after Woking at night publicising 'Light up the Night'                    | Karen Porter, WBC   | Delivered to all Woking Borough households  | All divisions             |
| 19 September    | Partnership Action Day in Maybury focusing on graffiti and anti-social behaviour. Alpha Road.  | All partners  |   | Woking Central            |
| Early October   | Article on 'Light up the Night' activities in Woking Local Partnership team's first newsletter to members, SCC services and local community groups | Local Partnerships Team, SCC  | Circulated widely to Members, service managers and local organisations and groups | All divisions             |
| 7 October       | Police Neighbourhood Panel meeting (Maybury West) 7.30pm at Maybury Centre   | PC Catherine Wright   | Advertised on Police website, local press, local notice boards, residents         | Woking Central (Maybury)  |

SCC Local Committee (Woking)



| Date                     | Activity  | Responsibility        | Publicity   | Electoral Division              |
|--------------------------|---|-----------------------|---|---------------------------------|
|                          |   |                       | newsletters etc   |                                 |
| 7 October                | Police Neighbourhood Panel meeting<br>7.30pm at Community Centre, Sundridge Road, Old Woking  | PC Paul May           | Advertised on Police website, local press, local notice boards, residents newsletters etc | Woking South (Old Woking)       |
| 12 October               | Police Neighbourhood Panel meeting<br>7.00pm at Horsell Village Hall  | PC Josh Parish        | Advertised on Police website, local press, local notice boards, residents newsletters etc | Horsell                         |
| 19 – 23 October          | Domestic Abuse Week. Awareness raising activities including stands with information and give aways in Wolsey Place for three days, Peacocks for two days and Woking station for one day, static display at Woking library, articles in the Woking Magazine and the local press and coverage on local radio. | Camilla Edmiston, WBC | Local press and radio.<br>Publicity stands  | All divisions                   |
| 21 <sup>st</sup> October | Police Neighbourhood Panel meeting.<br>7.30pm at Parkview Centre  | PC Stuart Watt        | Advertised on Police website, local press, local notice boards, residents newsletters etc | Woking Central                  |
| 23 October               | Presence at Diwali lantern parade to tell local community about events and activities   | WBC                   |   | All divisions/town centre based |

| <b>Date</b>       | <b>Activity</b>   | <b>Responsibility</b>   | <b>Publicity</b>  | <b>Electoral Division</b>         |
|-------------------|---|---|---|-----------------------------------|
|                   | during 'Light up the Night' week  |   |   |                                   |
| October/early Nov | Initiative to test purchase fireworks by Surrey Trading Standards                     | SCC Trading Standards and Surrey Fire & Rescue                    |   | All divisions                     |
| 26 October        | News release issued to kick off entire 'Light up the Night' campaign                  | Karen Porter, WBC<br>(approvals to be sought from other partners) | Media evaluation  | All divisions                     |
| 26 October        | Police Neighbourhood Panel meeting 7.30pm at St Johns Memorial Hall                   | PC Claire Leggat  | Advertised on Police website, local press, local notice boards, residents newsletters etc | St Johns and Brookwood (St Johns) |
| 28 October        | Quake Goldsworth Park around Goldsworth Park around Lakers/Generation Centre/Waitrose | All partners  | TBC   | Woking Central and Knaphill       |
| 29 October        | Police Neighbourhood Panel meeting 7.30pm at Winston Churchill School                 | PC Tina Anscombe  | Advertised on Police website, local press, local notice boards, residents newsletters etc | St Johns and Brookwood            |
| 31 October        | 'Neon Night' family cycle ride event around Woking to promote safe cycling            | Sarah Akerman, SCC Cycle Woking                                   | TBC   | All divisions/town centre based   |

**ITEM 7**

| <b>Date</b>    | <b>Activity</b>   | <b>Responsibility</b>  | <b>Publicity</b>  | <b>Electoral Division</b>       |
|----------------|---|--|---|---------------------------------|
| End October    | Work with schools on lead up to Halloween to help youngsters appreciate how scary the event can be for older people   | Gabrielle Johnson, WBC; Faye Stoneman, SCC YDS; Chris Webb, Surrey Fire & Rescue |   | All divisions                   |
| End October    | Distribution of community safety survey to identify residents concerns about going out a night via Active Citizens group, Neighbourhood Watches and Citizens' Panel and to local cinema/theatre goers | Karen Porter ,WBC; Tracey Spencer, Surrey Police                                 |   | All divisions                   |
| End of October | Distribution of Surrey Police Newsletter. To include an article on Light up the Night.  | Surrey Police  | Newsletter to every household   | All divisions                   |
| TBC            | Police Neighbourhood Panel meeting at Goldsworth Primary School   | PC Simon Praine/PC Jo Wright   | Advertised on Police website, local press, local notice boards, residents newsletters etc | Woking Central (Town Centre)    |
| 2 Nov          | Cycle safely initiative – presence at Woking train station (Albion Square Canopy). Light up your bike. Surveys and promo items to be handed out.  | Cycle Woking   | TBC   | All divisions/town centre based |
| 3 Nov          | Road safety initiative. Activities with local school including speedwatch and bikeability. Photocall opportunity with local media.  | Sarah Akerman, SCC   |   | All divisions                   |
| 3 November     | Police Neighbourhood Panel meeting  | PC Catherine   | Advertised on   | Woking Central                  |

**SCC Local Committee (Woking)**

| <b>Date</b> | <b>Activity</b>   | <b>Responsibility</b>                    | <b>Publicity</b>  | <b>Electoral Division</b>       |
|-------------|---|--|---|---------------------------------|
|             | (Maybury East) 7.30pm at Alpha Road, Maybury  | Wright                                   | Police website, local press, local notice boards, residents newsletters etc               | (Maybury)                       |
| 3 November  | Police Neighbourhood Panel meeting. 7.30pm at Village Hall, High Road, Byfleet                | PC Phil Beach                            | Advertised on Police website, local press, local notice boards, residents newsletters etc | The Byfleets (Byfleet)          |
| 4 Nov       | Roadshow vehicle at Morrisons Supermarket.  | WBC Neighbourhood Watch, Anne Taylor     |   | Woking Central                  |
| 5 Nov       | Light up the night exhibition and vehicle in Town Square (coincides with late night shopping) | WBC                                      |   | All divisions/town centre based |
| 6 Nov       | Night of action in town centre – messages about safe taxis, personal safety                   | Surrey Police                            |   | All divisions/town centre based |
| 7 Nov       | Exhibition vehicle at Woking Park for fireworks, awareness raising with all local partners    | WBC, Police, Surrey Fire and Rescue, SCC |   | All divisions                   |
| 12 November | Police Neighbourhood Panel meeting 7.00pm at Goldwater Lodge                                  | PC Chris Grantham                        | Advertised on Police website, local press, local notice boards, residents                 | Knaphill                        |

| Date          | Activity  | Responsibility                           | Publicity  | Electoral Division                       |
|---------------|---|--|--|--|
|               |   |  | newsletters etc  |  |
| November      | Launch of Safe Drive, Stay Alive campaign   | Chris Webb,<br>Surrey Fire and<br>Rescue | TBC  | All Divisions                            |
| November      | First Roadside Education and Enforcement Day  | Safer Travel, SCC                        |  | TBC                                      |
| 25th November | Police Neighbourhood Panel meeting.<br>7.30pm at St John the Baptist Church,<br>Camphill Road, West Byfleet     | PC Phil Beach                            | Advertised on<br>Police website,<br>local press, local<br>notice boards,<br>residents<br>newsletters etc | The Byfleets<br>(West Byfleet)           |
| 1 December    | Police Neighbourhood Panel meeting<br>(Mount Herman East) 7.30pm at Christian<br>Science Church, Heathside Road | PC Catherine<br>Wright                   | Advertised on<br>Police website,<br>local press, local<br>notice boards,<br>residents<br>newsletters etc | Pyrford                                  |
| 1 December    | Police Neighbourhood Panel meeting<br>7.30pm at Brookwood Primary School  | PC Tina<br>Anscombe                      | Advertised on<br>Police website,<br>local press, local<br>notice boards,<br>residents<br>newsletters etc | St Johns and<br>Brookwood<br>(Brookwood) |
| 3 December    | Police Neighbourhood Panel meeting<br>7.30pm at Holy Trinity Church, Chobham<br>Road                            | PC Tina<br>Anscombe                      | Advertised on<br>Police website,<br>local press, local<br>notice boards,                                 | Knaphill                                 |

**ITEM 7**

| <b>Date</b>               | <b>Activity</b>   | <b>Responsibility</b>    | <b>Publicity</b>   | <b>Electoral Division</b>      |
|---------------------------|---|--------------------------|--|--------------------------------|
|                           |   |                          | residents<br>newsletters etc   |                                |
| 7 December                | Police Neighbourhood Panel meeting<br>7.00pm at Horsell Village Hall                            | PC Josh Parish           | Advertised on<br>Police website,<br>local press, local<br>notice boards,<br>residents<br>newsletters etc | Horsell                        |
| 10 December               | Police Neighbourhood Panel meeting.<br>7.30pm at Pyrford Village War Memorial<br>Hall, Pyrford  | PC Phil Beach            | Advertised on<br>Police website,<br>local press, local<br>notice boards,<br>residents<br>newsletters etc | Pyrford                        |
| 16 <sup>th</sup> December | Police Neighbourhood Panel meeting.<br>7.30pm at Parkview Centre                                | PC Stuart Watt           | Advertised on<br>Police website,<br>local press, local<br>notice boards,<br>residents<br>newsletters etc | Woking Central<br>(Sheerwater) |
| 20 January 2010           | Police Neighbourhood Panel meeting<br>7.30pm at Community Centre, Sundridge<br>Road, Old Woking | PC Paul May              | Advertised on<br>Police website,<br>local press, local<br>notice boards,<br>residents<br>newsletters etc | Woking South<br>(Old Woking)   |
| TBC                       | Junior Citizen for year 6 pupils – covering a<br>three week period.                             | Camilla Edmiston,<br>WBC |  | All divisions                  |

**SCC Local Committee (Woking)**

**ITEM 7**

| <b>Date</b> | <b>Activity</b>                           | <b>Responsibility</b> | <b>Publicity</b>              | <b>Electoral Division</b> |
|-------------|---|-----------------------|-------------------------------|---------------------------|
| April 2010  | Distribution of Surrey Police Newsletter. | Surrey Police         | Newsletter to every household | All divisions             |



## Annex 3

### Neighbourhood Police

Dates of future Panel meetings will be posted on the Surrey Police website: [www.surrey.police.uk](http://www.surrey.police.uk) and follow the link to your neighbourhood. They are also highlighted within the table set out in Annex 2.

#### Neighbourhood police details

|                                |                              |
|--------------------------------|------------------------------|
| Sheerwater                     | PC Stuart Watt               |
| Byfleet, West Byfleet, Pyrford | PC Phil Beach                |
| Maybury                        | PC Catherine Wright          |
| Old Woking                     | PC Paul May                  |
| St. Johns                      | PC Clare Leggat              |
| Woking Town                    | PC Simon Praine/PC Jo Wright |
| Knaphill                       | PC Tina Anscombe             |
| Horsell                        | PC Josh Parish               |
| Goldsworth Park                | PC Chris Grantham            |

#### Neighbourhood & Community Safety Sergeants:

PS Chris Smith  
 PS Andy Audsley  
 PS Tina Griffiths  
 PS Mark Bridge

To contact neighbourhood officers please use the following generic number and email address:

Tel: 0845 125 2222

Email:

Eastern Team – [w\\_safer\\_woking\\_eas@surrey.pnn.police.uk](mailto:w_safer_woking_eas@surrey.pnn.police.uk)  
 (Sheerwater, Byfleet, Maybury)

Western Team – [w\\_safer\\_woking\\_wes@surrey.pnn.police.uk](mailto:w_safer_woking_wes@surrey.pnn.police.uk).  
 (Knaphill, Horsell, Goldsworth Park)

Central team – [w\\_safer\\_woking\\_cen@surrey.pnn.police.uk](mailto:w_safer_woking_cen@surrey.pnn.police.uk)  
 (Old Woking, St. Johns, Woking Town)

**SURREY POLICE**  
With you, making Surrey safer  
www.surrey.police.uk

## WOKING

### Safer Neighbourhood Policing Teams

**SAFER NEIGHBOURHOODS**

The map of Woking is divided into several Safer Neighbourhood Policing Teams, each with a group of officers and PCSOs. Arrows point from the team names to their respective areas on the map.

- Woking Town**
  - PC Simon Praine
  - PC Jo Wright
  - PCSO Emma Boulwood
  - PCSO Dino Gomez
- Horsell**
  - PC Josh Parish
  - PCSO Kimberley Muir
- Sheerwater**
  - PC Stuart Watt
  - PCSO Mital Patel
  - PCSO Neil Wilkinson
- Goldsworth Park**
  - PC Chris Grantham
  - PCSO Hannah Newman
  - PCSO David Stewart
  - PCSO Jess Seaward
- Knaphill and Brookwood**
  - PC Tina Anscombe
  - PCSO Adam Coombs
  - PCSO Sultan Khan
  - PCSO Naz Raja
- Mount Hermon, St Johns, Hook Heath, Mayford and Sutton Green**
  - PC Clare Leggat
  - PCSO Leanne Roberts
  - PCSO Carina Jewell
- Maybury**
  - PC Catherine Wright
  - PCSO Davina Keogh
  - PCSO Jack Walker
- Old Woking, Kingfield, Westfield and Barnsbury**
  - PC Paul May
  - PCSO Siobhan Williams
  - PCSO Gareth Morgan
- Byfleet, West Byfleet and Pyrford**
  - PC Phil Beach
  - PCSO Emma Herbert
  - PCSO Abby Cowee
  - PCSO Lesley Foster

ver. Aug09

Surrey Police has dedicated Safer Neighbourhood Policing Teams working in your area to tackle the issues that matter most to you.  
Call your team on 0845 125 2222 or visit [www.surrey.police.uk](http://www.surrey.police.uk) for details of the meetings in your area where you can raise your concerns.  
Please call 999 in a genuine emergency requiring police attendance. If you would prefer to give information anonymously call Crimestoppers on 0800

[www.surrey.police.uk/woking](http://www.surrey.police.uk/woking)

Copyright © A-Z Map Co Ltd. © Crown Copyright 2008. All rights reserved. License number 100017202  
Reproduced from the Ordnance Survey mapping with the permission of the Controller of Her Majesty's Stationary Office © Crown copyright  
Unauthorized reproduction infringes Crown copyright and may lead to prosecution or civil proceedings. Surrey Police License No. 100017219 2008.

## Annex 4

Your neighbourhood Your neighbourhood Your neighbourhood

## Meet your Neighbourhood Team...

The officers below are operating in the Borough's nine neighbourhoods to help all residents feel safe, secure and proud of the place in which they live. But they can't do all of this without your help. If you have an issue that you would like to raise with them, please check who the relevant officer is and contact them on the number/email provided. But please remember, if it's an emergency, don't hesitate to call 999.

**HORSELL**



**Council Neighbourhood Officer**  
**Kate Wilson**  
Email: kate.wilson@woking.gov.uk  
Phone: 01483 743465



**PC Josh Parish**  
Email: w\_safer\_woking\_wes@surrey.pnn.police.uk  
Phone: 0845 125 2222 ext: 39944

**PCSO Kimberley Muir**  
Email: w\_safer\_woking\_wes@surrey.pnn.police.uk  
Phone: 0845 125 2222 ext: 39944

**WOKING FIRE SERVICE**



**Chris Webb**  
Email: chris.webb@surreycc.gov.uk  
Phone: 01483 772539

**KNAPHILL AND BROOKWOOD**



**Council Neighbourhood Officer**  
**Kate Wilson**  
Email: kate.wilson@woking.gov.uk  
Phone: 01483 743465



**PC Tina Anscombe**  
Email: w\_safer\_woking\_wes@surrey.pnn.police.uk  
Phone: 0845 125 2222 ext: 39944

**PCSO Adam Coombs**  
**PCSO Sultan Khan**  
Email: w\_safer\_woking\_wes@surrey.pnn.police.uk  
Phone: 0845 125 2222 ext: 39944

**WOKING TOWN**



**Council Neighbourhood Officer**  
**Andy Calfe**  
Email: andy.calfe@woking.gov.uk  
Phone: 01483 743451



**PC Simon Praise**  
Email: w\_safer\_woking\_cen@surrey.pnn.police.uk  
Phone: 0845 125 2222 ext: 30055

**PCSO Emma Boulton**  
**PCSO Naz Raja**  
Email: w\_safer\_woking\_cen@surrey.pnn.police.uk  
Phone: 0845 125 2222 ext: 30055

**GOLDSWORTH PARK**



**Council Neighbourhood Officer**  
**Nick Roach**  
Email: nick.roach@woking.gov.uk  
Phone: 01483 743469

**PC Chris Grantham**  
Email: w\_safer\_woking\_wes@surrey.pnn.police.uk  
Phone: 0845 125 2222 ext: 39944

**PCSO David Stewart**  
**PCSO Hannah Newman**  
Email: w\_safer\_woking\_wes@surrey.pnn.police.uk  
Phone: 0845 125 2222 ext: 39944



# Your neighbourhood Your neighbourhood

## Your neighbourhood Your neighbourhood Your neighbourhood

**SHEERWATER**



**Council Neighbourhood Officer**  
**Yvette Lanham**  
Email: yvette.lanham@woking.gov.uk  
Phone: 01483 743475



**PC Stuart Watt**  
Email:  
w\_safer\_woking\_eas@surrey.pnn.police.uk  
Phone: 0845 125 2222 ext: 39911

**PCSO Mital Patel**  
**PCSO Neil Wilkinson**  
w\_safer\_woking\_eas@surrey.pnn.police.uk  
Phone: 0845 125 2222 ext: 39911

**Surrey County Council**  
**Highways Officers**

If you spot a problem related to roads in your neighbourhood, please contact one of the following officers.

**Email:** wah@surreycc.gov.uk  
**Phone:** 0845 600 9009



**Doug Richards**



**Matt Borrie**

**BYFLEET, WEST BYFLEET AND PYRFORD**



**Council Neighbourhood Officer**  
**Prue Ibbs**  
Email: prue.ibbs@woking.gov.uk  
Phone: 01483 743482



**PC Philip Beach**  
Email:  
w\_safer\_woking\_eas@surrey.pnn.police.uk  
Phone: 0845 125 2222 ext: 39911

**PCSO Lesley Foster**  
**PCSO Emma Herbert**  
**PCSO Abby Cowee**  
Email: w\_safer\_woking\_eas@surrey.pnn.police.uk  
Phone: 0845 125 2222 ext: 39911

**OLD WOKING, KINGFIELD AND WESTFIELD**



**Council Neighbourhood Officer**  
**Yvette Lanham**  
Email: yvette.lanham@woking.gov.uk  
Phone: 01483 743475



**PC Paul May**  
Email:  
w\_safer\_woking\_cen@surrey.pnn.police.uk  
Phone: 0845 125 2222 ext: 30055

**PCSO Siobhan Williams**  
**PCSO Gareth Morgan**  
Email: w\_safer\_woking\_cen@surrey.pnn.police.uk  
Phone: 0845 125 2222 ext: 30055

**MAYBURY**



**Council Neighbourhood Officer**  
**Andy Calfe**  
Email: andy.calfe@woking.gov.uk  
Phone: 01483 743451



**PC Catherine Wright**  
Email:  
w\_safer\_woking\_eas@surrey.pnn.police.uk  
Phone: 0845 125 2222 ext: 39911

**PCSO Davina Keogh**

**HOOK HEATH, MOUNT HERMON, ST JOHNS AND MAYFORD**



**Council Neighbourhood Officer**  
**Tony Tweedie**  
Email: tony.tweedie@woking.gov.uk  
Phone: 01483 743806



**PC Clare Leggat**  
Email:  
w\_safer\_woking\_cen@surrey.pnn.police.uk  
Phone: 0845 125 2222 ext: 30055

**PCSO Carina Jewell**  
**PCSO Leanne Roberts**  
Email: w\_safer\_woking\_cen@surrey.pnn.police.uk  
Phone: 0845 125 2222 ext: 30055



**All details correct at the time of going to print.**

SCC Local Committee (Woking)

26



## Annex 5

### PREVENT Initiatives

#### 1. Mosque Capacity Building Programme – Faith Associates (continuing)

Available to all Mosques in the Borough, this on going programme which aims:

- At improved capacity of the Mosques to achieve their full potential to serve the Muslim community as well as the community at large.
- To help the management committees and staff (e.g. Imams) to gain sufficient knowledge and skills to play the role of a resource for other Muslim & non - Muslim organisations in their area.
- Leadership training/development programme for Mosques and welfare associations.

#### 2. Community Leadership Development –Windsor Fellowship (continuing)

An on-going programme from PVE –pathfinder fund but broadened to all students (different faiths) of secondary schools/collages to promote cohesion and leadership amongst diverse youth of Woking.

The programme is to be run by Windsor Fellowship in partnership with Woking Borough Council for 15 youth (aged 14-16 yrs) as 6 one day workshops designed to increase knowledge and a range of leadership skills of the participants.

#### 3. Community Safety and Development through Drama/Theatre in Schools- Khayaal Theatre Company (08/09)

The use of Theatre/Drama is not common in Muslim societies and would thus be a good medium to use in primary and secondary schools to address some of the issues such as disaffection and exclusion experienced by the youth.

The programme would involve commissioning of plays, Islamic heritage based work (e.g. Storytelling, Muslim world drama workshops) and dramatised tales.

The By carrying out such a programme it is hoped to achieve:

- Better inter-cultural understanding and cohesion
- Provide cultural leadership
- Promote greater engagement on Islamic issues
- Tackle religious/extremist dogma
- Address root causes of exclusion and disaffection in youth

#### 4. Muslim Women Empowerment – Muslima (continuing)

The objectives of the programme are:

- Setting out the need for Muslim women and girls to understand the meaning of “leadership” within the family context, within the community context and within wider society context.
- Increase awareness of the leadership role parents can and should play in development of children
- Exploring the role Muslim girls can play in educating and informing them selves when identify who they are & what role they wish to play in wider society
- Raising awareness of issues surrounding Islam phobia and Violent Extremism and their role within these spheres
- Identifying and exploring the need for Muslim women to lead organisations in engaging in dialogue and demonstrate that their role is vital to the work in promoting non violent means of resolving conflict, citizenship and mainstreaming within civic society
- Increase awareness of the importance of engagement and integration with society at large

#### **5. Working Together – Frontera Ltd (08/09)**

The aim of this programme is:

- To raise awareness on the importance of social integration and to provide opportunities to people to develop their relevant basic skills and to recognize, understand and assimilate certain shared values in Britain
- To provide guidance and support towards transfer and application of such skills and learning to their own environments and to everyday situations including the spheres of their personal, communal, work and social life

To collaboratively develop agreed standards that motivate them to become leaders in order to practise and promote shared values.

#### **6. ESOL and Social Skills Programme – Woking College (08/09)**

The programme involves setting up and managing groups which bring together people of different ethnic backgrounds to get to know and understand each other better. Through learning English and conversation they will improve their ability to communicate in the wider community. These groups will also increase cultural awareness of British culture while also valuing the heritages of participants. The groups were held in Woking’s three most significant areas of deprivation: Maybury, Sheerwater and Lakeview.

#### **7. Community Training on Prevent – Waterhouse Consultants (starting 09/10)**

The project is a 2 day intensive training programme which aims to train community members in increasing their understanding of Preventing Violent Extremism. The objectives are:

## **ITEM 7**

- (a) Develop wider community knowledge of Prevent and in so doing;
  - increase acceptance of the benefit of Prevent to the community;
  - and,
  - establish a clearer approach to intervention if concerns are raised about individuals
- (b) Build trust, confidence and a partnership working approach